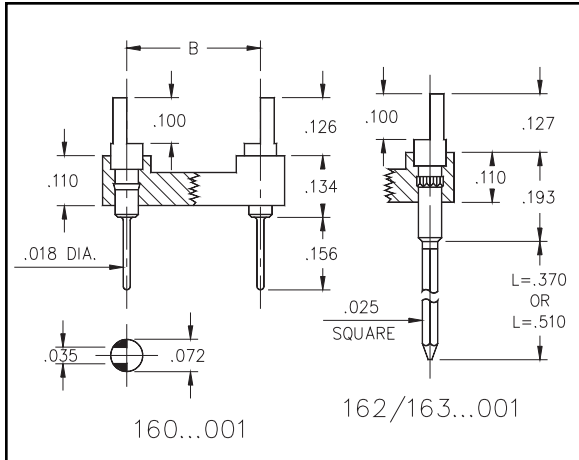


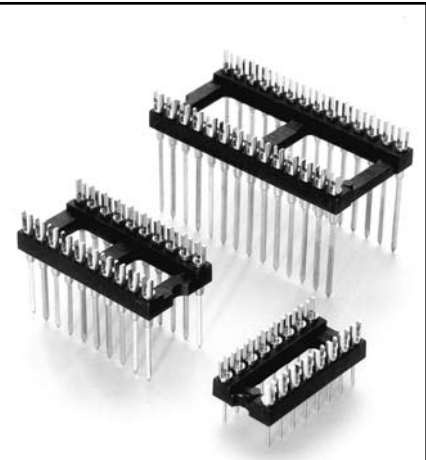


DUAL-IN-LINE SLOTTED HEADERS Solder Tail and Wrapost Open Frame

Series 160, 162, 163



- Series 160, 162, and 163 DIL Headers are equipped with slotted heads to accept wires or component leads.
- Series 160 terminations are pluggable .018" dia. solder tails MM #0282, See page 174 for details. Series 162 and 163 terminations are two or three level wrapposts MM #1106. See page 185 for details.
- Insulators are high temperature thermoplastic.



Total number of pins				Quantity per tube	<div style="border: 1px solid black; border-radius: 50%; padding: 5px; display: inline-block;"> XX=Plating Code See Below </div> <div style="border: 1px solid green; padding: 2px; display: inline-block; margin-left: 10px;"> Ordering Information <i>For RoHS compliance select ◇ plating code.</i> </div> <div style="border: 1px solid green; padding: 5px; display: inline-block; margin-left: 10px; text-align: center;"> RoHS <small>2002/95/EC</small> </div>		
	A	B	C		Solder Tail	2 Level Wrappost L = .370	3 Level Wrappost L = .510
	10	0.5	0.2		0.3	41	160-XX-210-00-001000
4	0.2	0.3	0.4	102	160-XX-304-00-001000	162-XX-304-00-001000	163-XX-304-00-001000
6	0.3	0.3	0.4	67	160-XX-306-00-001000	162-XX-306-00-001000	163-XX-306-00-001000
8	0.4	0.3	0.4	50	160-XX-308-00-001000	162-XX-308-00-001000	163-XX-308-00-001000
10	0.5	0.3	0.4	40	160-XX-310-00-001000	162-XX-310-00-001000	163-XX-310-00-001000
14	0.7	0.3	0.4	28	160-XX-314-00-001000	162-XX-314-00-001000	163-XX-314-00-001000
16	0.8	0.3	0.4	25	160-XX-316-00-001000	162-XX-316-00-001000	163-XX-316-00-001000
18	0.9	0.3	0.4	22	160-XX-318-00-001000	162-XX-318-00-001000	163-XX-318-00-001000
20	1.0	0.3	0.4	20	160-XX-320-00-001000	162-XX-320-00-001000	163-XX-320-00-001000
22	1.0	0.3	0.4	18	160-XX-322-00-001000	162-XX-322-00-001000	163-XX-322-00-001000
24	1.2	0.3	0.4	16	160-XX-324-00-001000	162-XX-324-00-001000	163-XX-324-00-001000
28	1.4	0.3	0.4	14	160-XX-328-00-001000	162-XX-328-00-001000	163-XX-328-00-001000
20	1.0	0.4	0.5	20	160-XX-420-00-001000	162-XX-420-00-001000	163-XX-420-00-001000
22	1.1	0.4	0.5	18	160-XX-422-00-001000	162-XX-422-00-001000	163-XX-422-00-001000
24	1.2	0.4	0.5	16	160-XX-424-00-001000	162-XX-424-00-001000	163-XX-424-00-001000
28	1.4	0.4	0.5	14	160-XX-428-00-001000	162-XX-428-00-001000	163-XX-428-00-001000
32	1.6	0.4	0.5	12	160-XX-432-00-001000	162-XX-432-00-001000	163-XX-432-00-001000
24	1.2	0.6	0.7	16	160-XX-624-00-001000	162-XX-624-00-001000	163-XX-624-00-001000
28	1.4	0.6	0.7	14	160-XX-628-00-001000	162-XX-628-00-001000	163-XX-628-00-001000
32	1.6	0.6	0.7	12	160-XX-632-00-001000	162-XX-632-00-001000	163-XX-632-00-001000
36	1.8	0.6	0.7	11	160-XX-636-00-001000	162-XX-636-00-001000	163-XX-636-00-001000
40	2.0	0.6	0.7	10	160-XX-640-00-001000	162-XX-640-00-001000	163-XX-640-00-001000
42	2.1	0.6	0.7	9	160-XX-642-00-001000	162-XX-642-00-001000	163-XX-642-00-001000
48	2.4	0.6	0.7	8	160-XX-648-00-001000	162-XX-648-00-001000	163-XX-648-00-001000
50	2.5	0.6	0.7	8	160-XX-650-00-001000	162-XX-650-00-001000	163-XX-650-00-001000
52	2.6	0.6	0.7	7	160-XX-652-00-001000	162-XX-652-00-001000	163-XX-652-00-001000
50	2.5	0.9	1.0	8	160-XX-950-00-001000	162-XX-950-00-001000	163-XX-950-00-001000
52	2.6	0.9	1.0	7	160-XX-952-00-001000	162-XX-952-00-001000	163-XX-952-00-001000
64	3.2	0.9	1.0	6	160-XX-964-00-001000	162-XX-964-00-001000	163-XX-964-00-001000
SPECIFY PLATING CODE XX=					10 ◇	90	40 ◇
Pin Plating					10μ" Au	200μ" Sn/Pb	200μ" Sn